

Alto 1

The Christmas Song

Swing ♩ = 90

4 A 15

21 B

25

29 C 7 1. 2. D 15

54 E

58

62 F 3

Alto 2

The Christmas Song

♩ = 90 Swing

4 A 15

21 B

25

29 C 7 1. 2. D 15

54 E

58

62 F 5

TS 1

The Christmas Song

Swing ♩ = 90

A Solo

4

f

9

13

18

Solo End

B

21

25

29 **C** 7 1. 2.

38 **D** 15

54 **E**

58 **E**

62 **F** 5

Bkl

The Christmas Song

Swing ♩ = 90

A

4 15

B

21

25

C

29

Solo

33

1. 2.

D

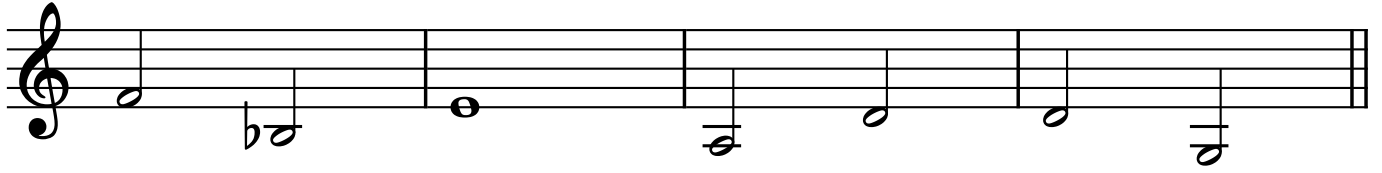
38

15

E

54

58



F

62

5



1 Bb

The Christmas Song

Swing ♩ = 90

A

4 15

Musical notation for section A, measures 4 to 15. It begins with a treble clef and a 4/4 time signature. Measure 4 contains a whole rest. A first ending bracket spans measures 5 through 15. The notation includes a repeat sign at the start of the first ending and a fermata over the final measure (15), which ends with a double bar line.

B

21

Musical notation for section B, measures 21 to 24. It begins with a treble clef and a key signature of one flat (Bb). The melody consists of quarter and eighth notes, with some notes beamed together. There are fermatas over measures 22 and 24.

25

Musical notation for section C, measures 25 to 28. It continues the melody from section B with quarter and eighth notes. Measure 28 ends with a fermata and a double bar line.

C **D**

29 7 1. 2. 15

Musical notation for section C and D, measures 29 to 43. Section C (measures 29-35) starts with a treble clef and a 7-measure rest. Section D (measures 36-43) begins with a first ending bracket (1. and 2. endings) and a 15-measure rest. Both sections end with a fermata and a double bar line.

E

54

Musical notation for section E, measures 54 to 57. It continues the melody with quarter and eighth notes and fermatas over measures 55 and 57.

58

Musical notation for section F, measures 58 to 61. It continues the melody with quarter and eighth notes. Measure 61 ends with a fermata and a double bar line.

F

62 3

Musical notation for section F, measures 62 to 65. It begins with a treble clef and a 3-measure rest. The melody consists of quarter and eighth notes. Measure 65 ends with a fermata and a double bar line.

2 Bb

The Christmas Song

Swing ♩ = 90 A

4 15

B

21

25

C

29

7

1. 2.

D

15

E

54

58

F

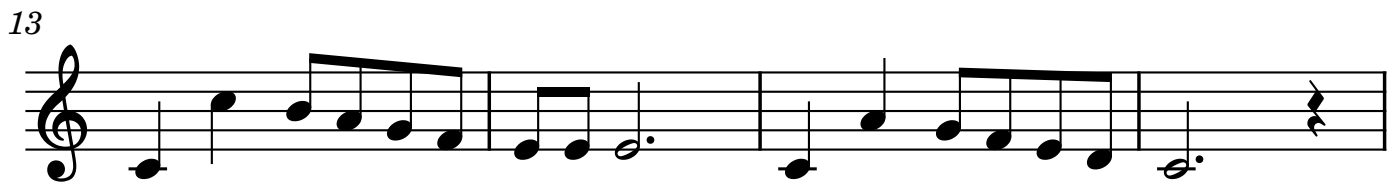
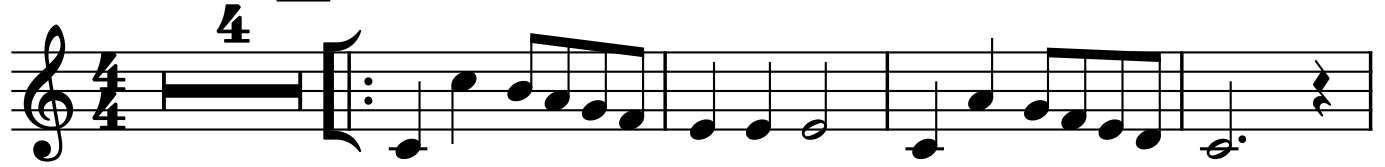
62

3

3 Bb

The Christmas Song

Swing ♩ = 90 A



B



C
29

7

1. 2.

D
38

15

E
54

58

F
62

3

Kb

The Christmas Song

Swing ♩ = 90

Solo

B \flat 6 F7 Gm7 E \flat E \flat m B \flat /F F \sharp °7 Gm Cm9 F7 \flat 9

5 **A** B \flat 6 Cm7 F7 B \flat Δ Cm7 F7 \flat 9 B \flat 6 Fm7 B \flat 7 E \flat Δ Ab9 (D7+)

9 Gm E \flat m6 Dm7/F E ϕ 7 A7 \flat 9 DΔ E \flat m7 Ab7 \flat 9 D \flat Δ Cm7 F7 \flat 9

13 B \flat 6 Cm7 F7 B \flat Δ F7 \flat 9 B \flat 6 Fm7 B \flat 7 E \flat Δ D7 Ab9

17 Gm E \flat m6 B \flat Δ E ϕ 7 A7 G7 F7 B \flat 6

21 **B** Fm7 B \flat 9 Fm7 B \flat 9 Fm7 B \flat 9 E \flat Δ

25 E \flat m7 Ab9 D \flat Δ Gm7 C7 \flat 5 Cm7 F7 \flat 9

29 **C** B \flat 6 Cm7 F7 B \flat Δ9 Cm7/F F7 \flat 9 Fm7 B \flat 7 E \flat Δ Ab9 (D7 \sharp 5)

33 Gm7 Ebm6 Dm7 Em7 Gm7 C^ø7 1. Bb6 Cm7/FF7 2. Bb6

D Solo
38 Bb6 Cm7 Dm7 EbΔ7 Bb Cm7 D7 Gm7 Ebm BbΔ7 Ebm6

43 Dm7 A7b9 DΔ7 Ebm7 Ab7 DbΔ7 Cm7 F7 Bb6 Cm7 Dm7 BbΔ7

48 Bb6 Cm7 D7 Gm7 Ebm7 BbΔ Ebm6 Dm7 A7 Dm7 Cm7 F7

53 Bb⁶₉ E Fm7 Bb7 Fm7 Bb9 Fm7 Bb9 EbΔ

58 Ebm7 Ab9 DbΔ Gm7 C7b5 Cm7 F7b9

F Solo
62 Bb6 Cm7 Dm7 EbΔ Bb Cm7 D7 Gm7 Ebm

66 BbΔ7 Ebm6 Dm A7 Dm7 Cm7 F7 Bb⁶₉